

Unique Downeast Maine Opportunity

25 Main Street, Franklin, Maine

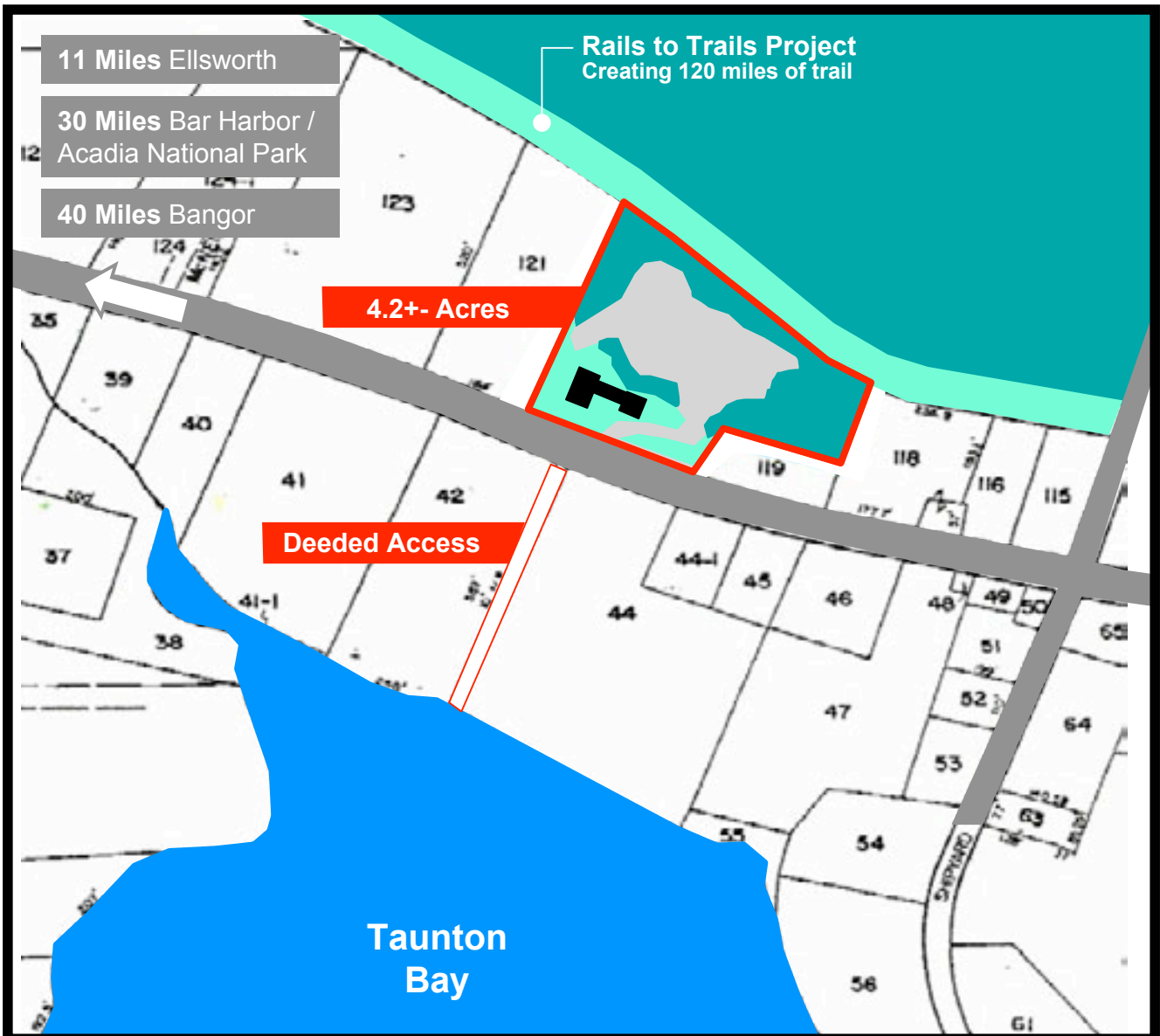
- Begun 1830's
- 37 Rooms
- 8 Bedrooms
- 8 Baths
- 5 Kitchens
- 6,400+ ft² enclosed space



Contact: Kimberly L. McClaughlin
Better Homes and Garden Real Estate - Town and Country
1162 Union Street
Bangor, Maine

Cell/Text: 207-667-7423
Office: 207-942-6711 Ext. 160
E Fax: 207-512-1110

kimberly@tcreal.com
www.tcreal.com



This property for sale will provide its new owner with a range of immediate and future options.

Initially begun in 1830, the floor plan has expanded across time to include a series of spaces that allow privacy, family life, extended family apartments, visiting guest quarters or even income producing alternatives.

The property is located in the rural coastal region of Maine that is commonly referred to as the "Downeast" area. The community of Franklin is halfway between the Mount Desert portion of Acadia National Park and their less know but equally stunning Schoodic Peninsula.

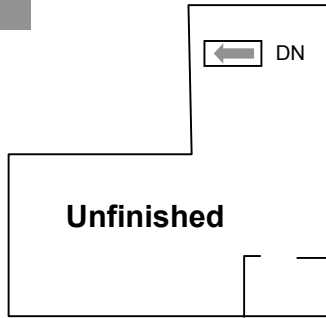
It is a full four season environment where Nature's cycles can be appreciated with a personal closeness that is not available in a more urban or suburban setting.

This rural location is complimented by easy access to the City of Ellsworth with its expanded selection of shops, stores and other businesses - both large and small. The City of Bangor offers even more options.

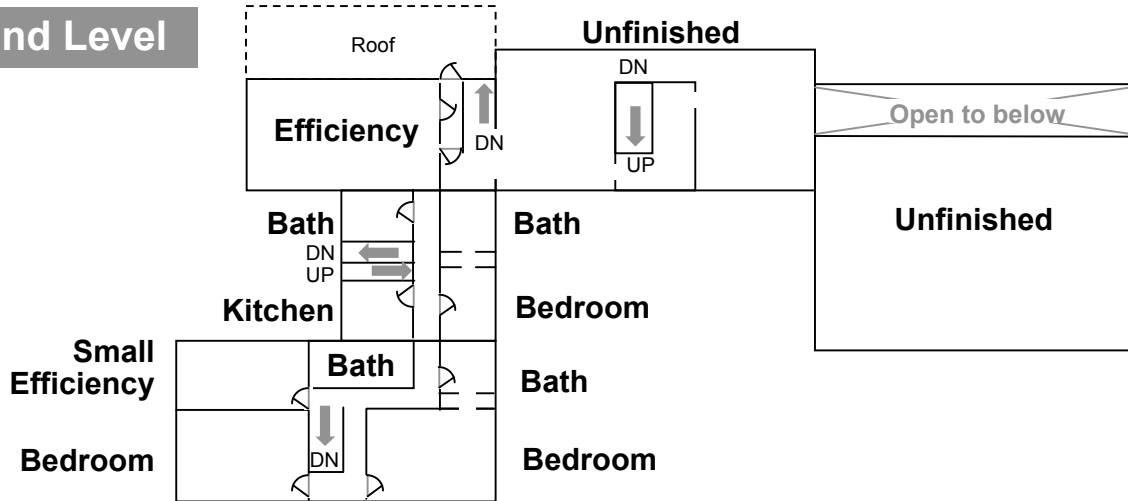
Make an appointment to see why this could be an excellent choice for you to make in 2010.

3rd Level

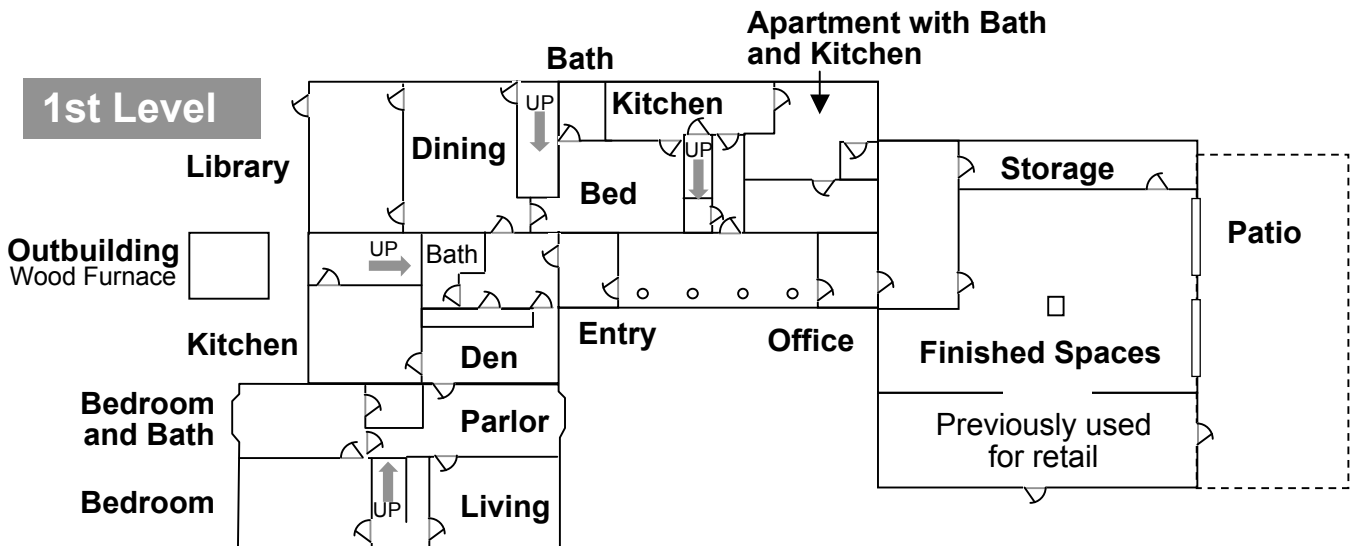
 Tower Room



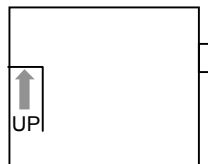
2nd Level



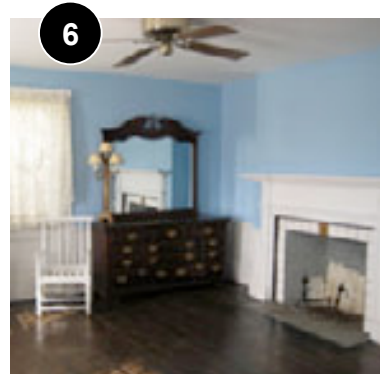
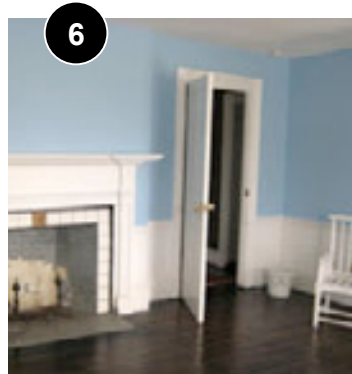
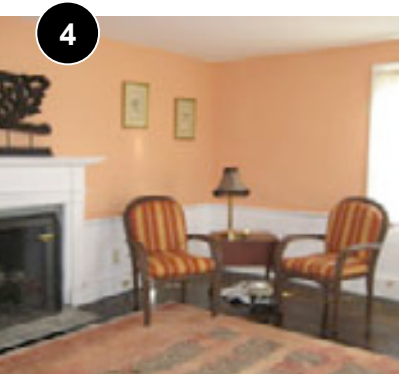
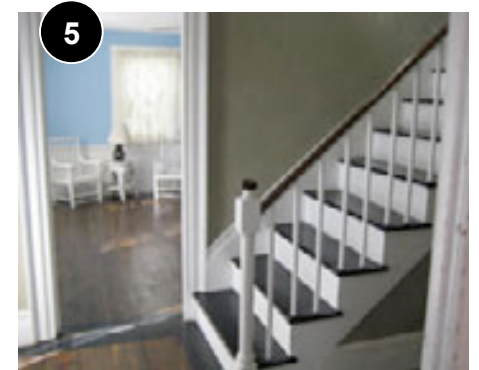
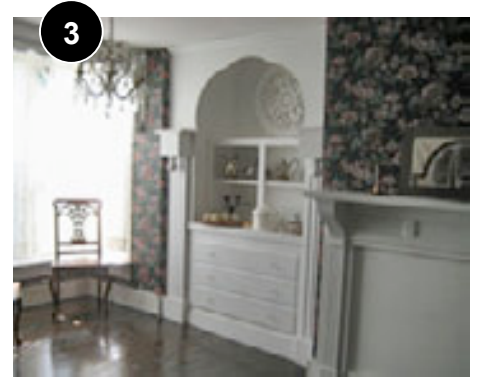
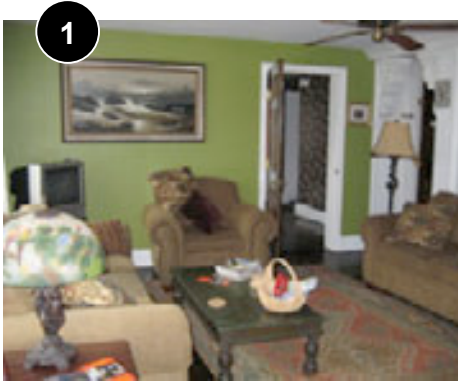
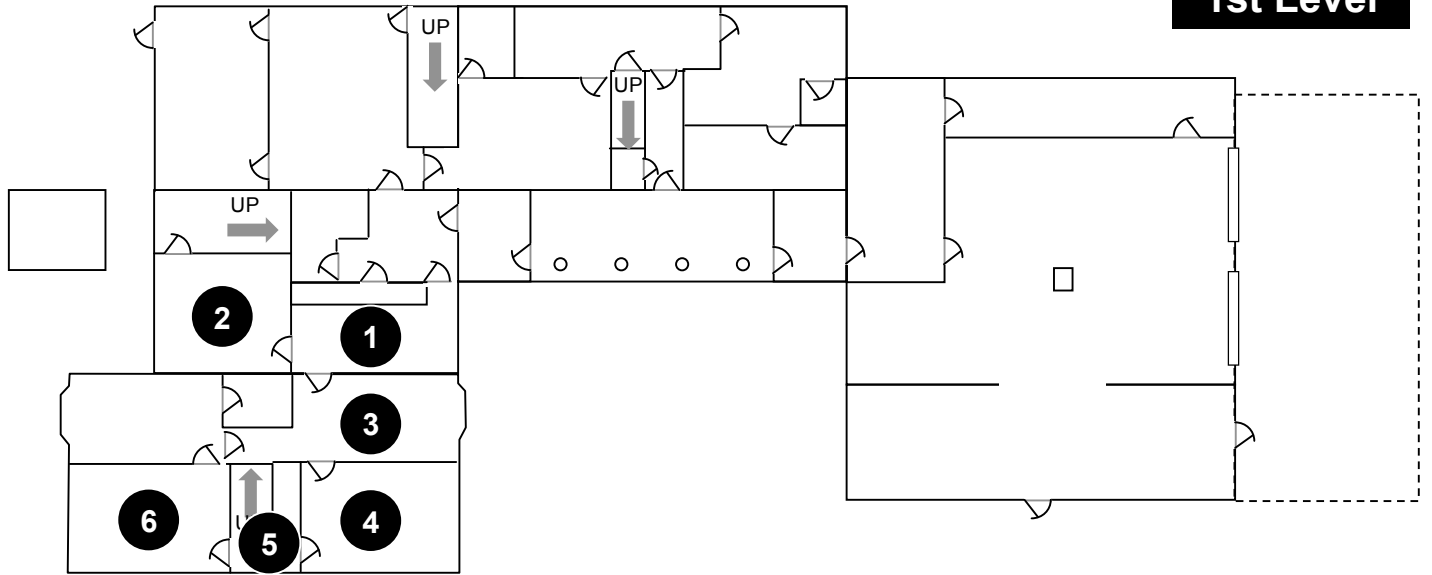
1st Level



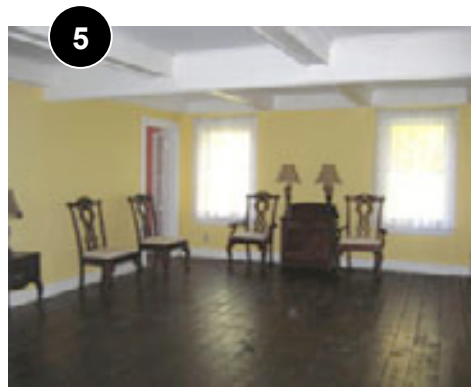
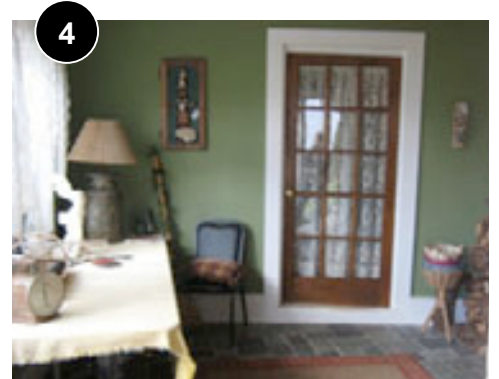
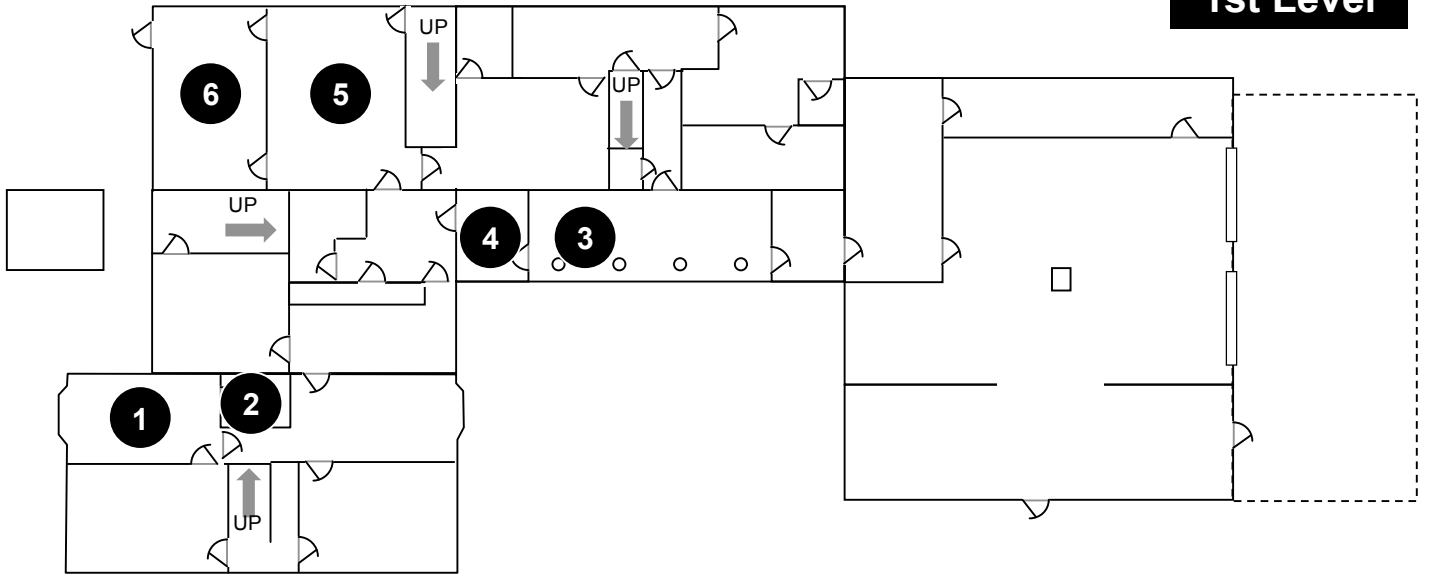
Cellar



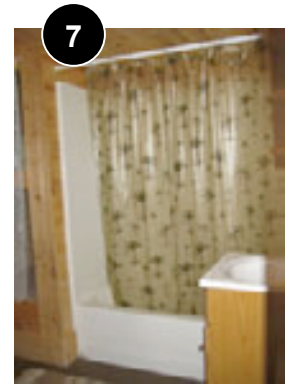
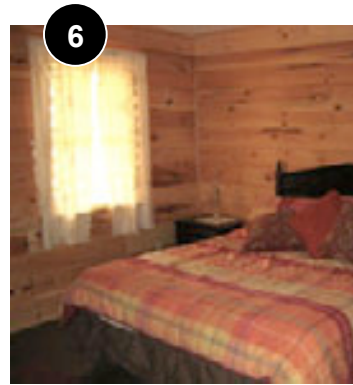
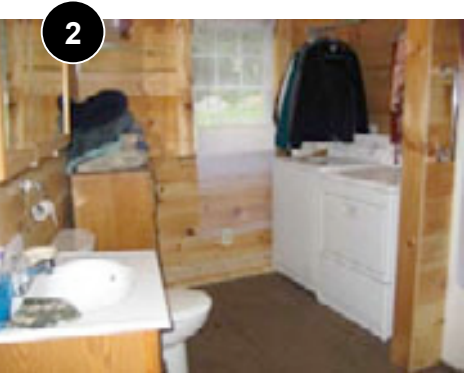
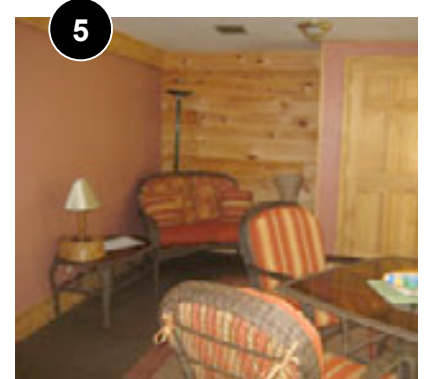
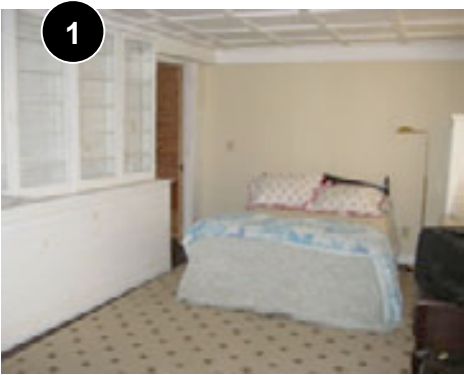
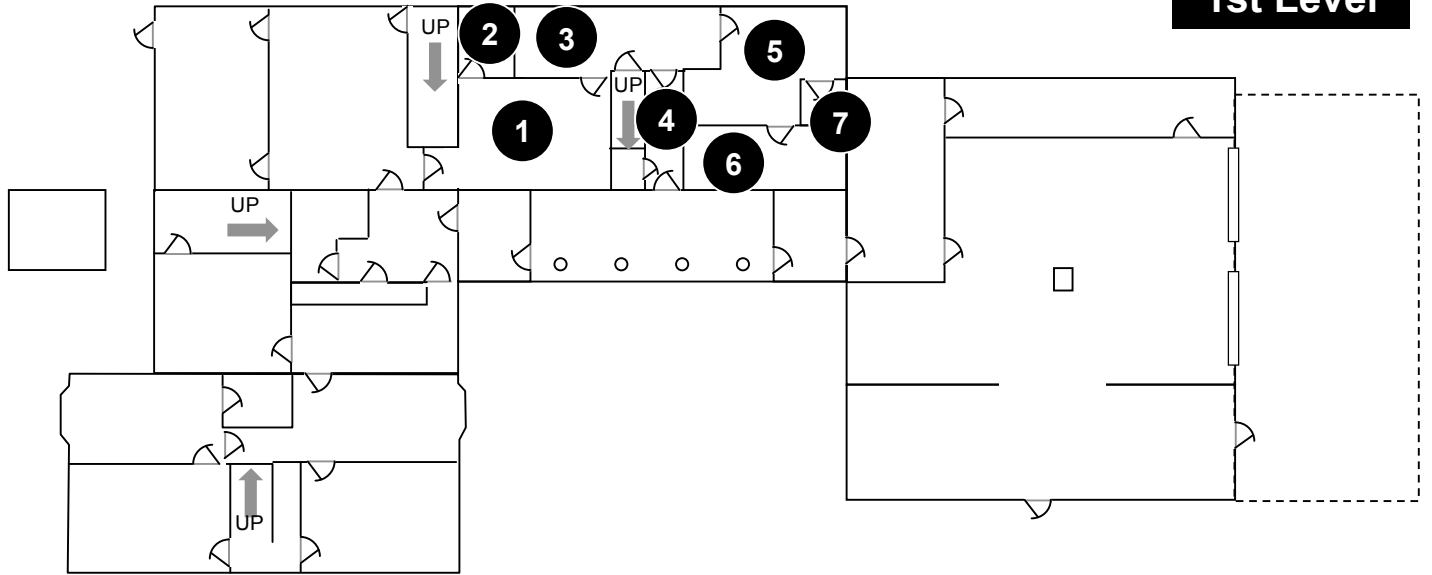
1st Level



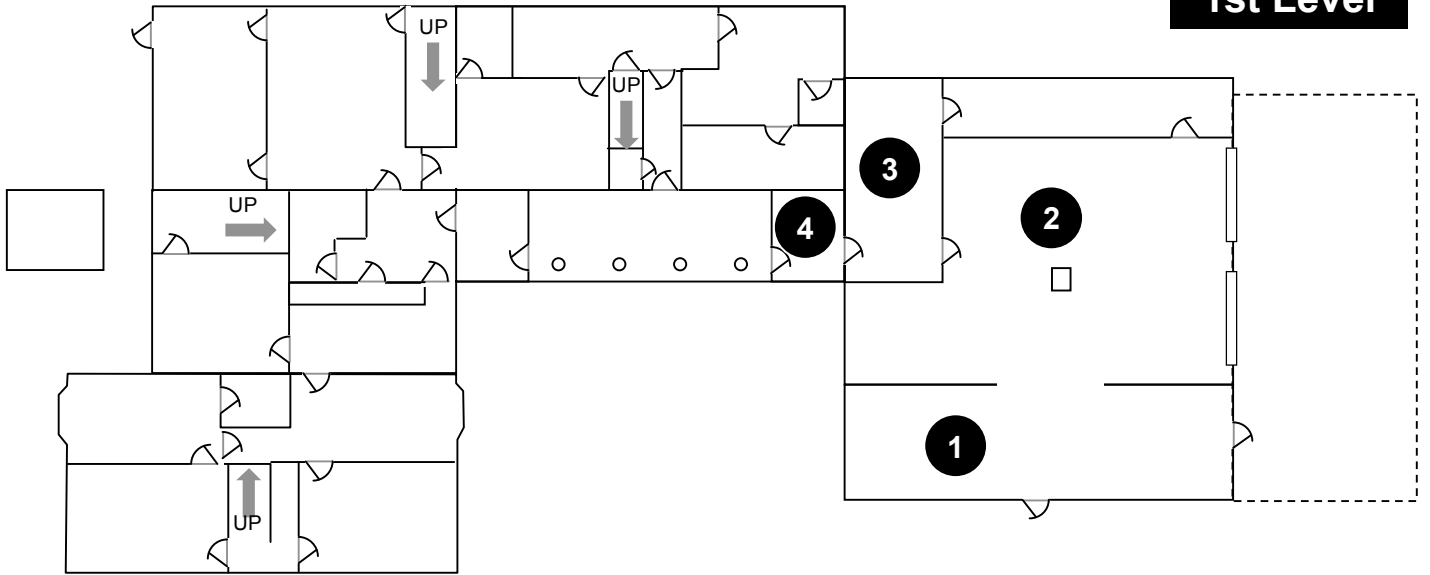
1st Level



1st Level



1st Level



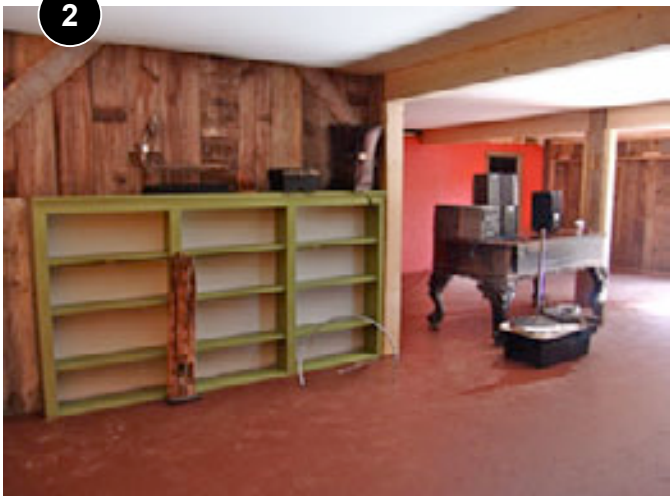
1



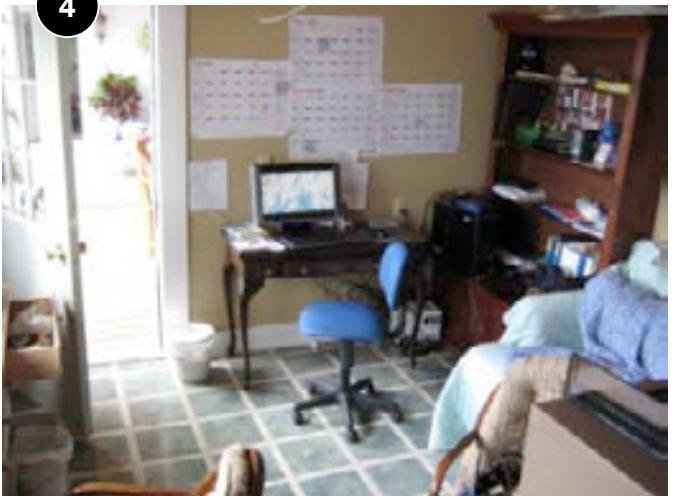
3



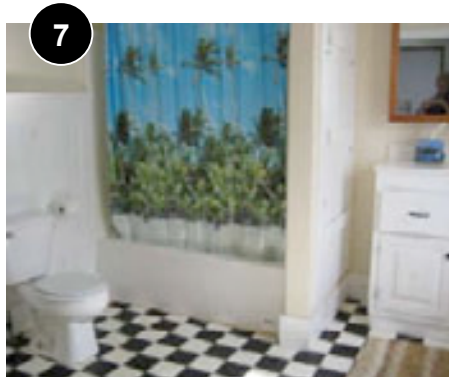
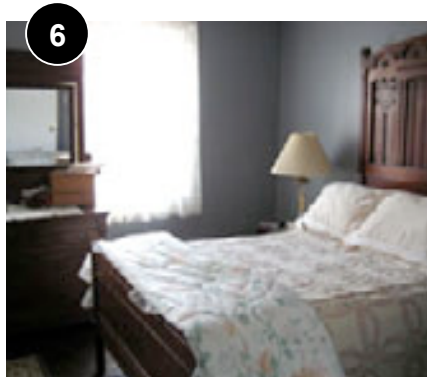
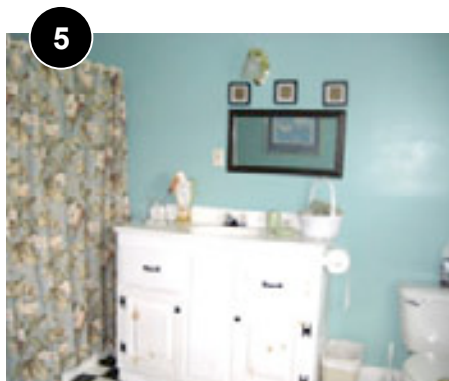
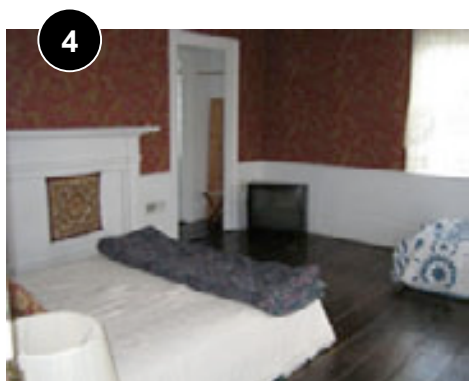
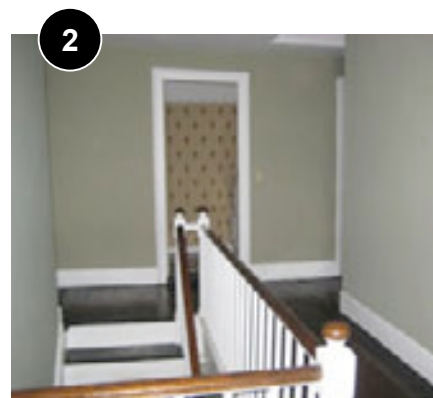
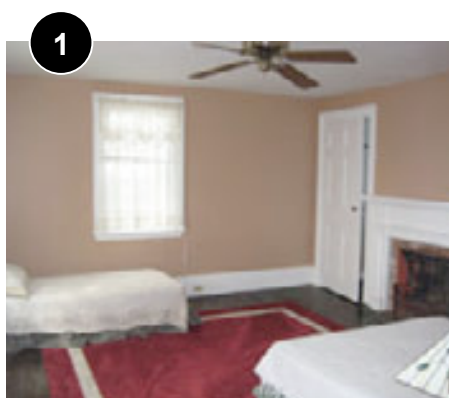
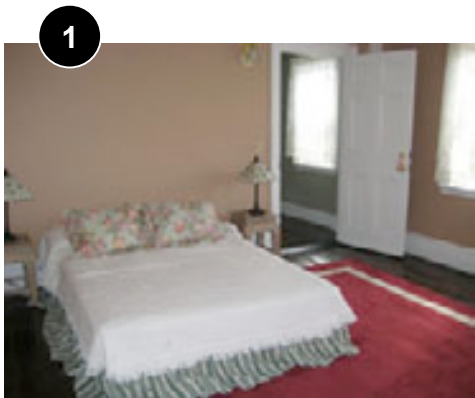
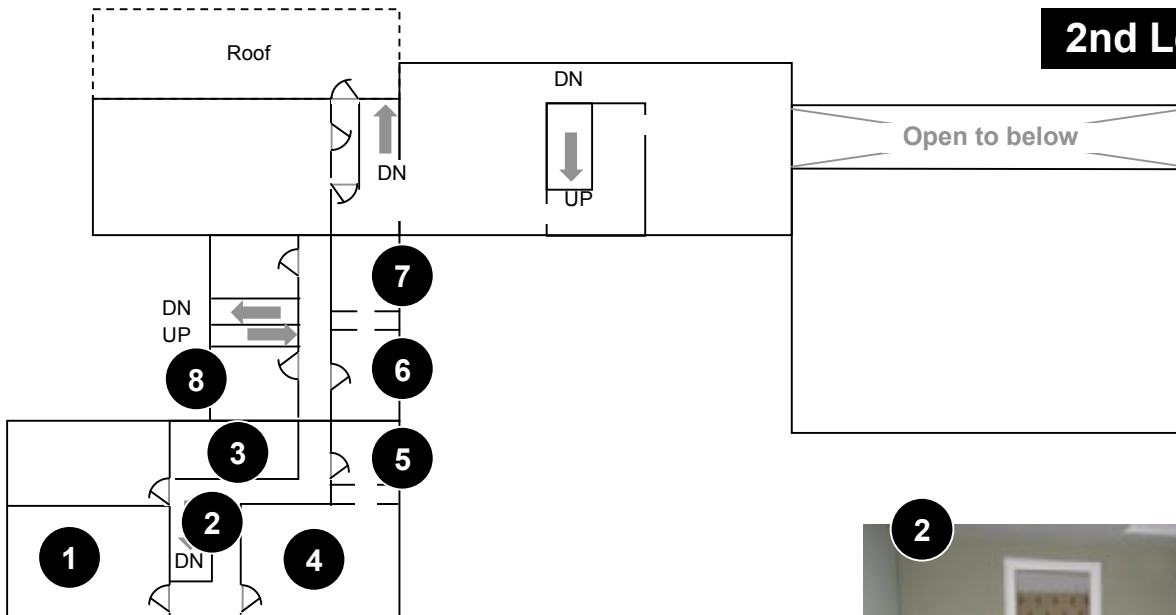
2



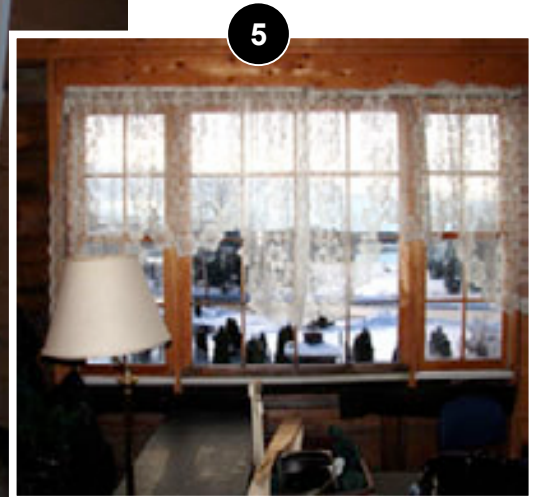
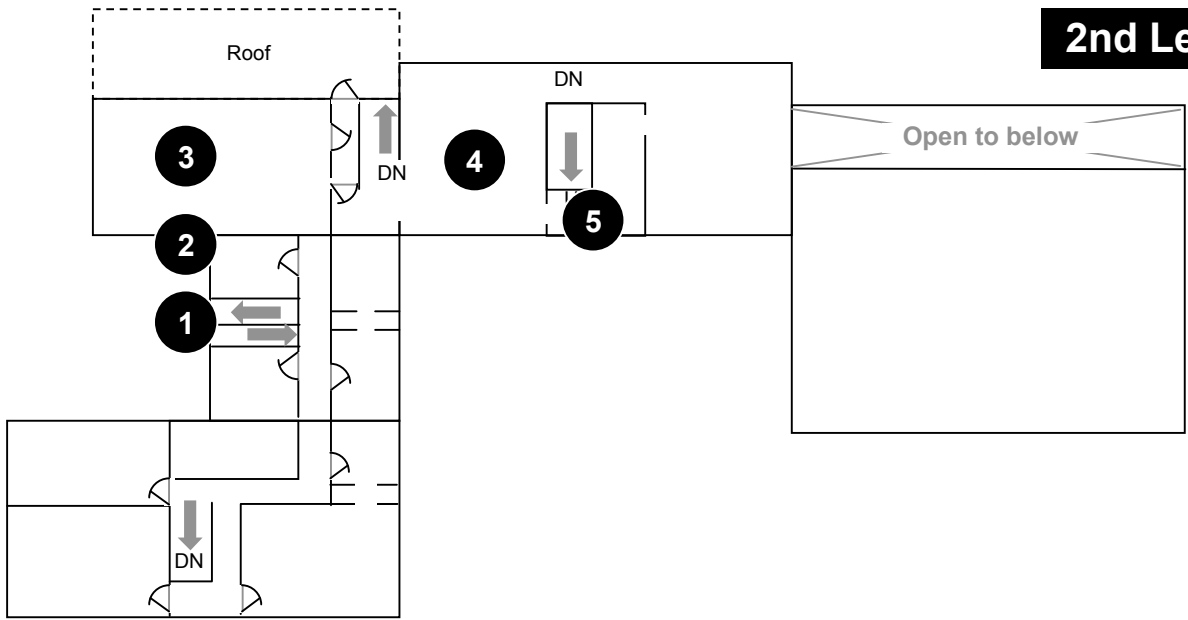
4

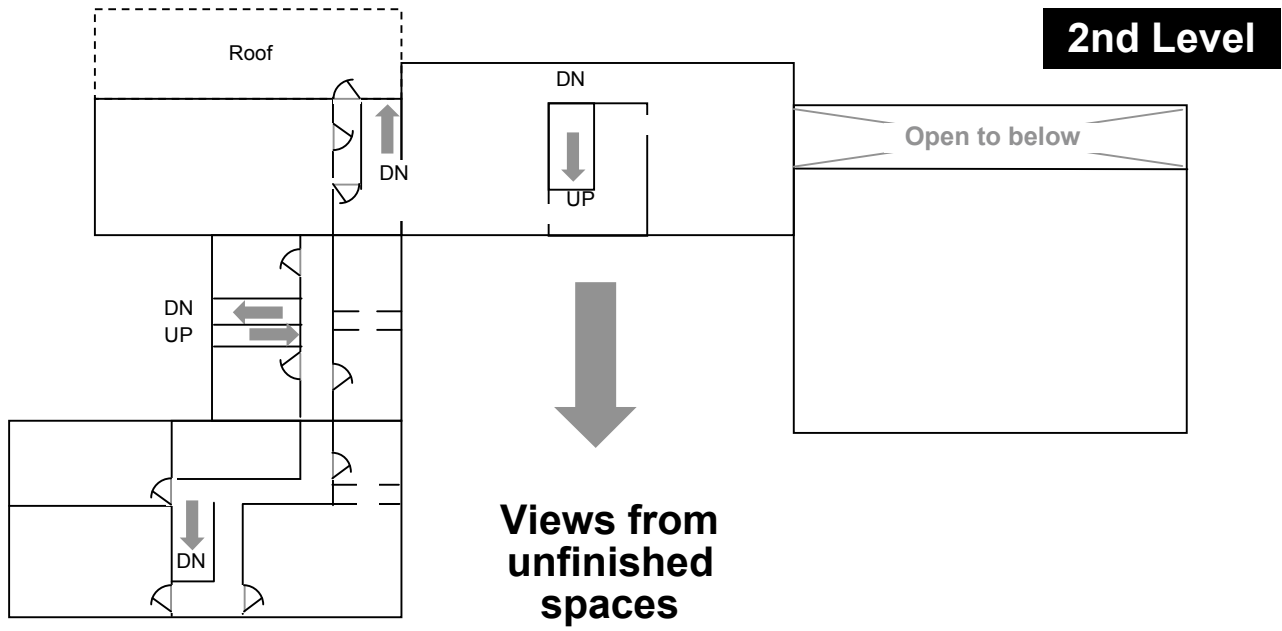


2nd Level



2nd Level





Exterior Views



Exterior Views

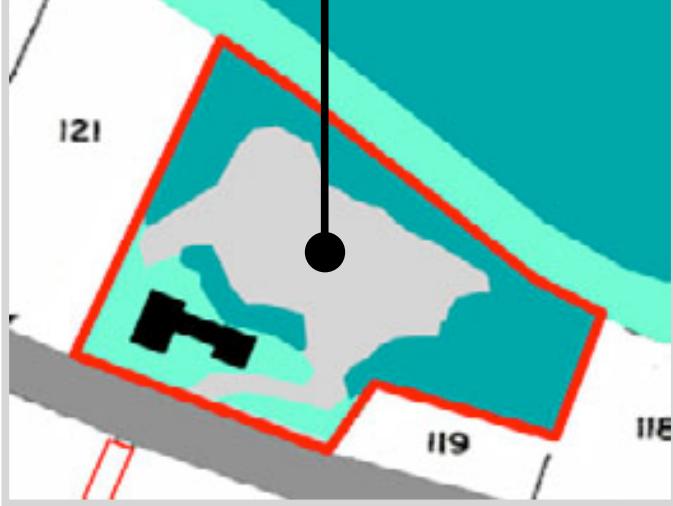


Exterior Views



Exterior Views

Initial Clearing and Landscaping for Meadow on Upper Property



Exterior Views



Rails to Trails 2009 Progress



Downeast Maine

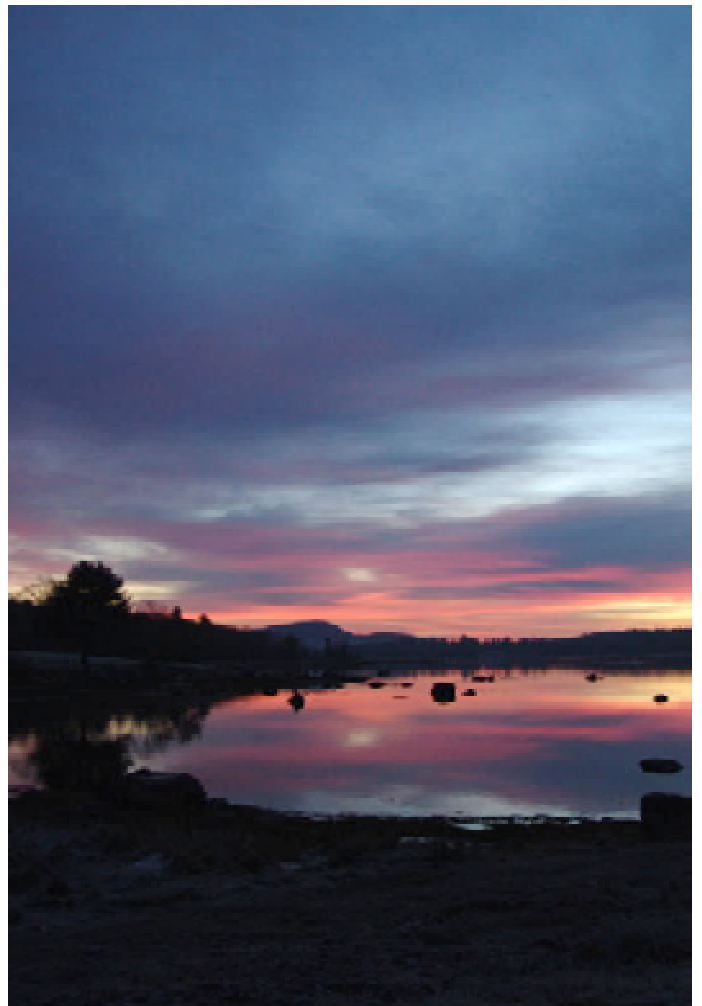
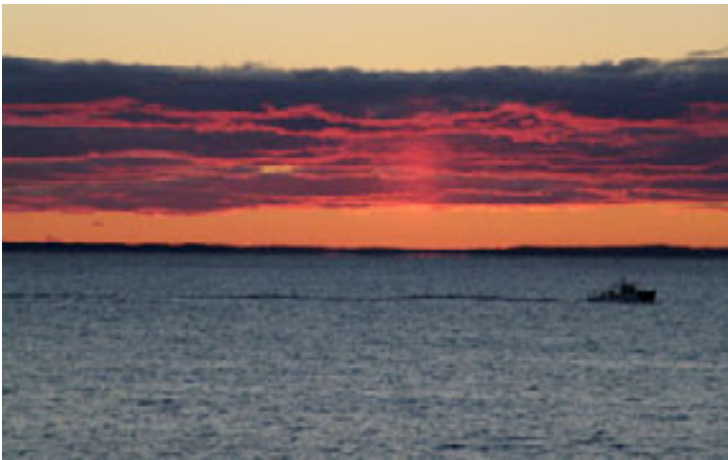
As a cultural region, Downeast Maine encompasses the rural communities of Hancock and Washington counties. Principal Downeast towns include Lubec, Calais, Eastport, and Machias. Bar Harbor, Blue Hill, and Ellsworth can also be considered Downeast communities.

It also includes Acadia National Park and the mainland portion of Acadia National Park known as the Schoodic Peninsula. Villages in the Schoodic area include Gouldsboro, Winter Harbor, Prospect Harbor, Steuben, and Milbridge.

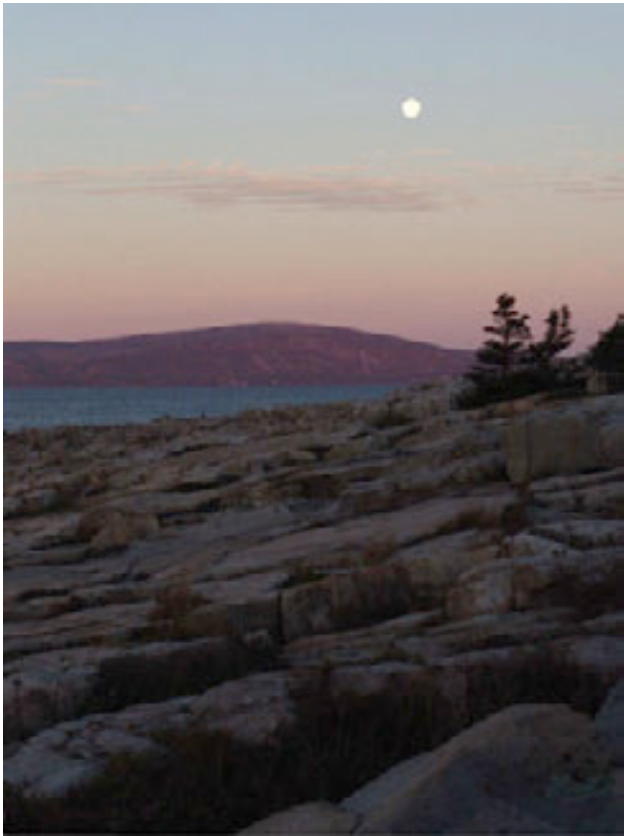
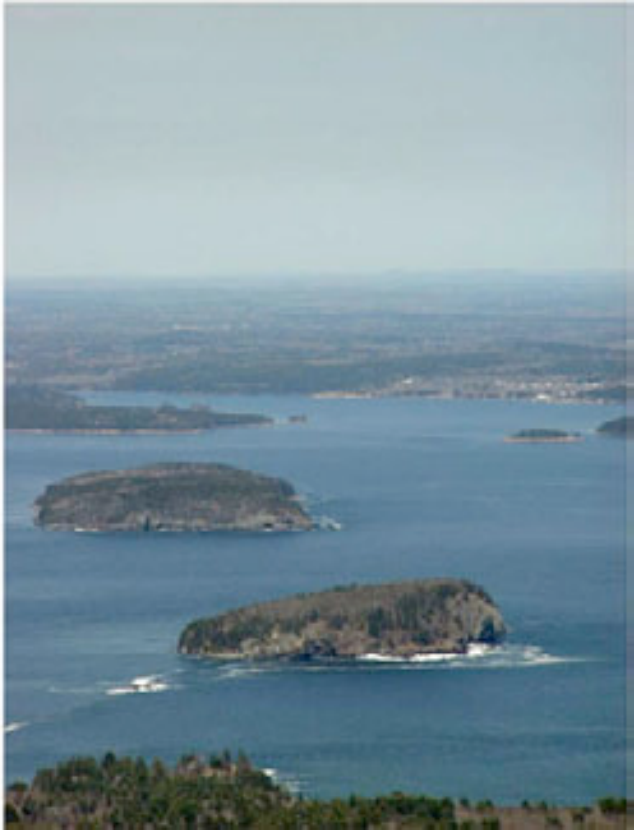


There are three National Wildlife Refuges (NWR's) in the region: Cross Island National Wildlife Refuge, Moosehorn National Wildlife Refuge, and Maine Coastal Islands National Wildlife Refuge which is in Steuben (formerly Petit Manan NWR).

Contrary to what some non-Mainers may believe, "Down East" can be best described as any point on the coast between Ellsworth and the Canadian border. At times, it is jokingly referred to as any point along the coast, east of the speaker.



Downeast Maine



Downeast Maine



Downeast Maine

